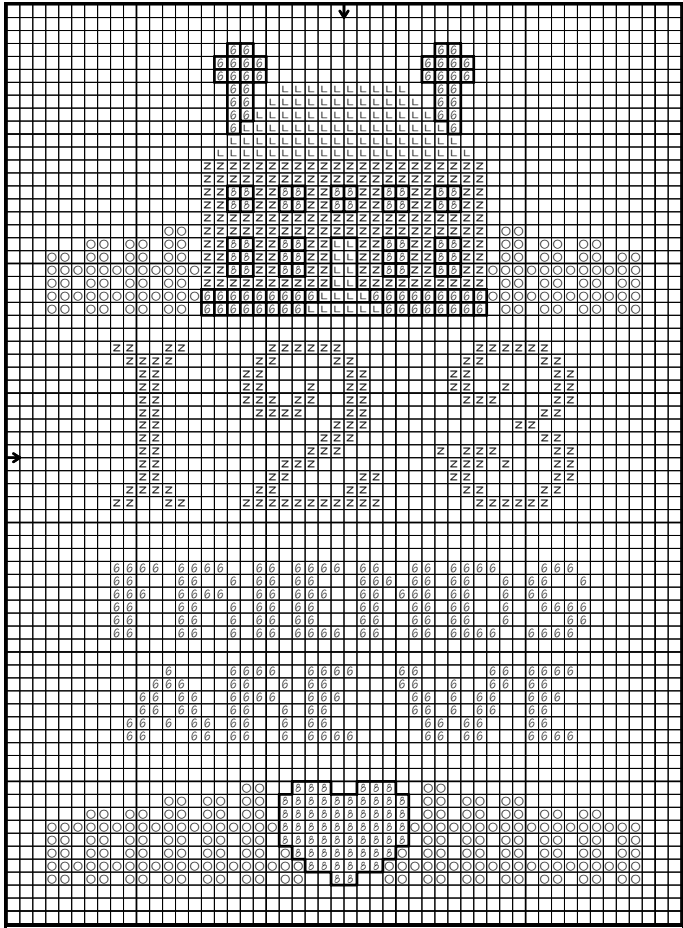


# FRIENDS ARE WE



Symbol	DMC	Anchor
O	3814	1074
None	3799	236
6	355	1014
8	3855	311
Z	930	1035
L	518	1039

Use two strands of floss for cross stitch and one strand for backstitch. Stitch over two fabric threads.

**Dimensions:**  
 32-ct. fabric: 2-7/8" w x 4" h  
 28-ct. fabric: 3-1/4" w x 4-5/8" h

**Stitch Count:** 46w x 65h

Backstitch house with 1 strand of 3799/236, backstitch heart with 1 strand of 355/1014.

Use a light colored fabric of your choice.

©2001 Something In Common

Compliments of:  
 SOMETHING IN COMMON  
 2604 Lily Lane  
 Wausau, WI 54401  
 Ph: 715-241-7770  
 Fax: 715-241-7771  
<http://www.somethingincom.com>

This chart may be distributed freely but not sold.