

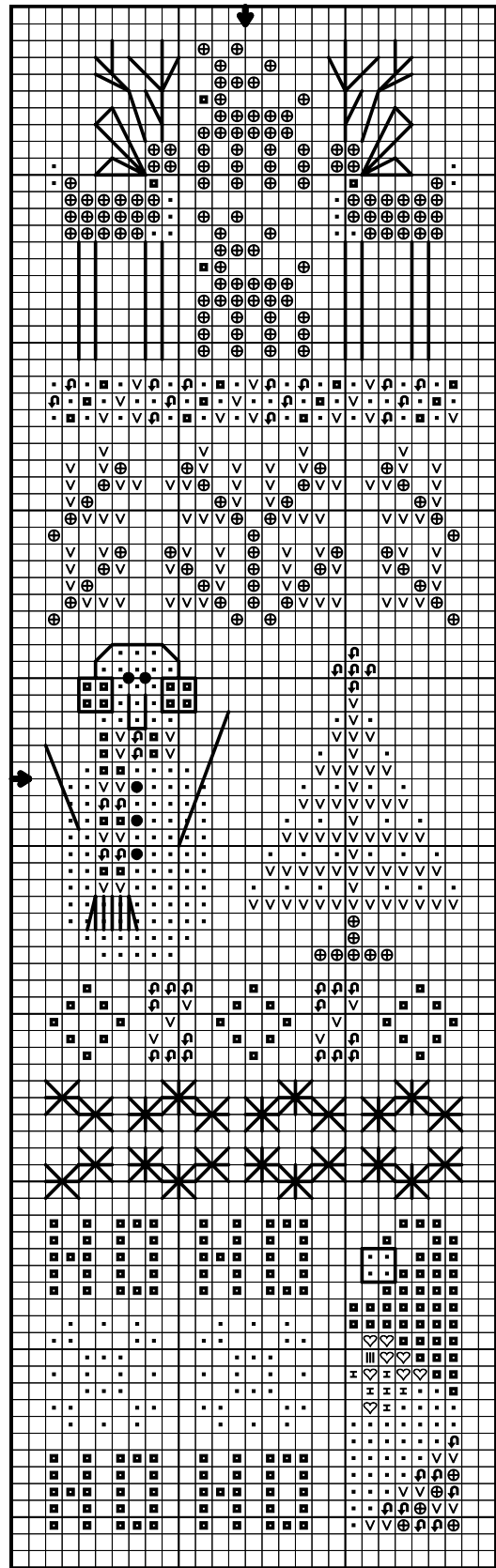
HO HO SAMPLER

Stitch Count: 25w x 89h

Finished Design Size:
1-1/2" wide by 5-1/2" high

Suggested Fabrics:
32-ct. Shell linen,
32-ct. Lambswool linen,
32-ct. Champayne/putty linen

Symb.	DMC	Anchor	Color Name
.	Blanc	2	White
■	304	1006	Christmas Red-Med.
	310	403	Black
♡	712	926	Cream
∩	725	305	Topaz
∨	895	1044	Hunter Green-Vy. Dk.
⊕	898	360	Coffee Brown-Vy. Dk.
⊥	945	881	Tawny



©2002 Something In Common



Backstitch, Straight Stitch, French Knot & Specialty Instructions (all with one strand of floss):

Reindeer antlers & legs: 310

Reindeer bows: 304

Snowman earmuffs, mouth & arms: 310

Snowman eyes & buttons— French Knots with 1 strand, 2 twists: 310

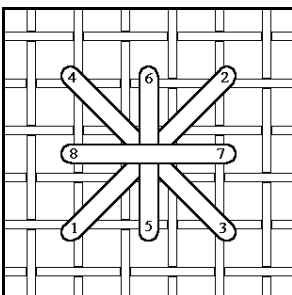
Snowman scarf: 895

Smyrna Crosses: 725

Tip of Santa's Hat: 304

Use two strands of floss over two fabric threads for all cross stitches and 1 strand for all backstitching, etc.

This chart may be freely downloaded from the Something In Common website and copied for distribution but it cannot be sold.



Smyrna Cross (linen diagram)

SEASON'S GREETINGS from:

SOMETHING IN COMMON
2604 Lily Lane
Wausau, WI 54401
(715) 241-7770

On the Web: www.somethingincom.com